

MARYLAND



Nurse-Family Partnership® is an evidence-based, community health program with over 45 years of evidence showing significant improvements in the health and lives of first-time moms and their children living in poverty.

6x \$ RETURN

EVERY \$1 INVESTED IN NFP SAVES \$6.60 IN FUTURE COSTS FOR THE HIGHEST-RISK FAMILIES SERVED¹

Nurse-Family Partnership works by having specially trained nurses regularly visit young, first-time moms-to-be, starting early in the pregnancy, continuing through the child’s second birthday. Mothers, babies, families and communities all benefit.



MARYLAND MOMS

20
Median age at intake

83%
Unmarried at intake

61%
Clients enrolled in Medicaid at intake

Less than or equal to \$6,000
Annual median household income at intake

*Aggregate data provided by the NSO. Includes state data from 01/01/2022 to 07/07/2023.

Race

- 1% White
- 77% Black or African American
- 0% Asian
- 1% American Indian or Alaska Native
- 0% Native Hawaiian or Pacific Islander
- 1% Multi-racial
- 1% Declined

Ethnicity

- 18% Hispanic
- 79% Non-Hispanic
- 0% Declined

*Aggregate data provided by the NSO. Includes state data from 01/01/2022 to 07/07/2023.

OUTCOMES FOR MARYLAND

*Aggregate data provided by the NSO. Includes state data from 01/01/2022 to 12/12/2023.

*Babies born at term are those who reached 37 weeks gestation

87% BABIES BORN AT TERM

81% MOTHERS INITIATED BREASTFEEDING

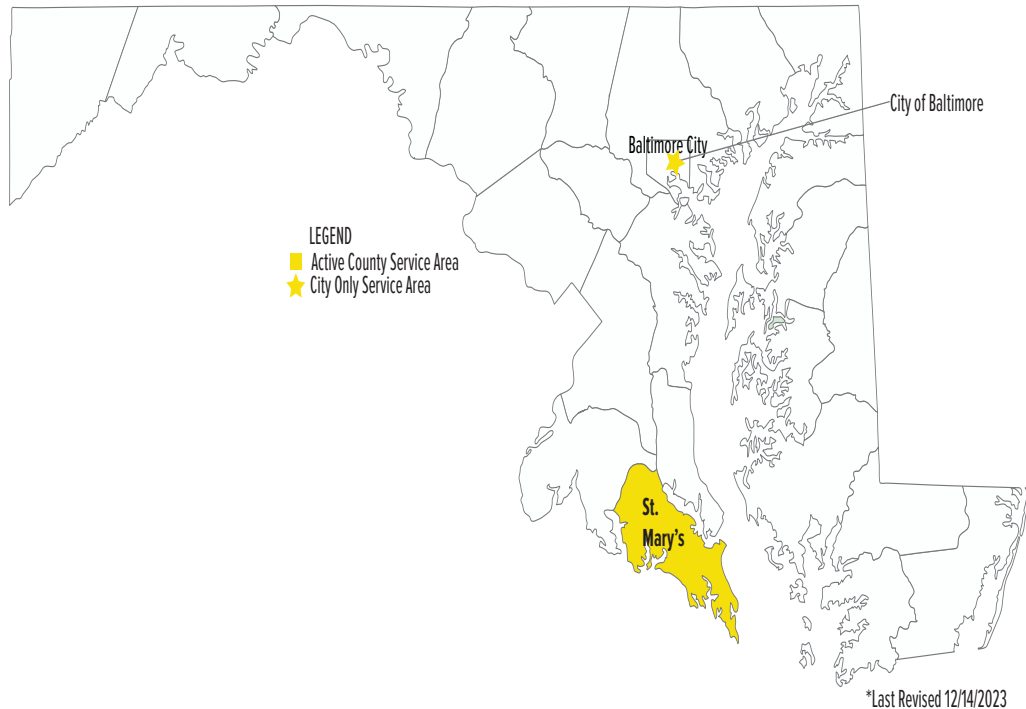
57% BABIES RECEIVED ALL IMMUNIZATIONS BY 24 MONTHS

63% OF CLIENTS 18+ WERE EMPLOYED AT 24 MONTHS



Nurse-Family Partnership Goals

1. Improve pregnancy outcomes by helping women engage in good preventive health practices.
2. Improve child health and development by helping parents provide responsible and competent care; and
3. Improve the economic self-sufficiency of the family by helping parents develop a vision for their own future.



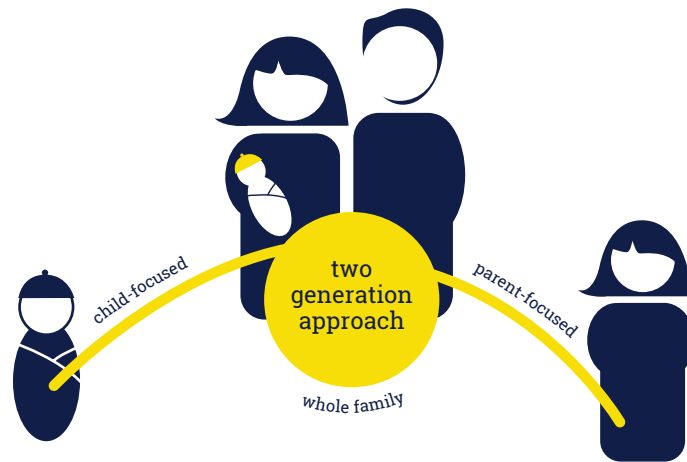
ESTABLISHED: 2012

**FAMILIES SERVED
SINCE 2012: 869**

**CURRENT FUNDED
CAPACITY: 200**

NETWORK PARTNERS

- Baltimore City Health Department
- NFP of St. Mary's County



Better Worlds Start with Great Mothers

Nurse-Family Partnership empowers vulnerable first-time moms to transform their lives and create better futures for themselves and their babies.



Katelyn Galbraith
(518) 779-0119

katelyn.galbraith@nursefamilypartnership.org