



IOWA

Nurse-Family Partnership® is an evidence-based, community health program with over 45 years of evidence showing significant improvements in the health and lives of first-time moms and their children living in poverty.

8x
\$ RETURN
EVERY \$1 INVESTED IN NFP SAVES \$8.20 IN FUTURE COSTS FOR THE HIGHEST-RISK FAMILIES SERVED¹

Nurse-Family Partnership works by having specially trained nurses regularly visit young, first-time moms-to-be, starting early in the pregnancy, continuing through the child's second birthday. Mothers, babies, families and communities all benefit.



IOWA MOMS

22
Median age at intake

82%
Unmarried at intake

79%
Clients enrolled in Medicaid at intake

\$16,000-\$20,000
Annual median household income at intake

*Aggregate data provided by the NSO. Includes state data from 01/01/2022 to 07/07/2023.

Race
68% White
13% Black or African American
10% Asian
1% American Indian or Alaska Native
1% Native Hawaiian or Pacific Islander
1% Multi-racial
0% Declined

Ethnicity
22% Hispanic
77% Non-Hispanic
0% Declined

*Aggregate data provided by the NSO. Includes state data from 01/01/2022 to 07/07/2023.

OUTCOMES FOR IOWA

*Aggregate data provided by the NSO. Includes state data from 01/01/2022 to 07/07/2023.

*Babies born at term are those who reached 37 weeks gestation

88% BABIES BORN AT TERM

90% MOTHERS INITIATED BREASTFEEDING

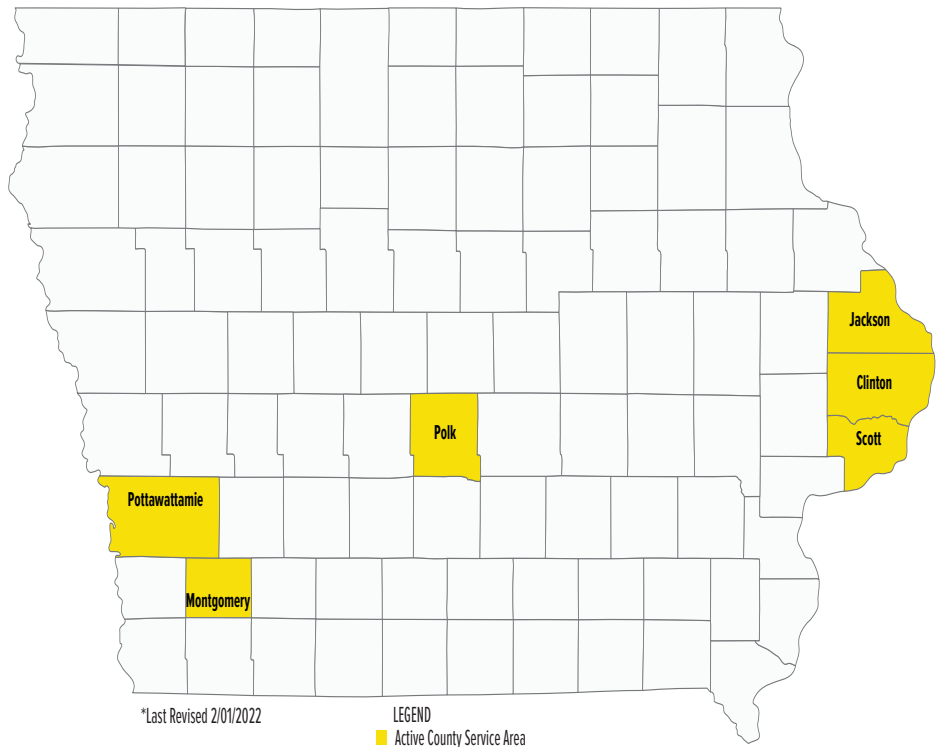
96% BABIES RECEIVED ALL IMMUNIZATIONS BY 24 MONTHS

71% OF CLIENTS 18+ WERE EMPLOYED AT 24 MONTHS



Nurse-Family Partnership Goals

1. Improve pregnancy outcomes by helping women engage in good preventive health practices.
2. Improve child health and development by helping parents provide responsible and competent care; and
3. Improve the economic self-sufficiency of the family by helping parents develop a vision for their own future.



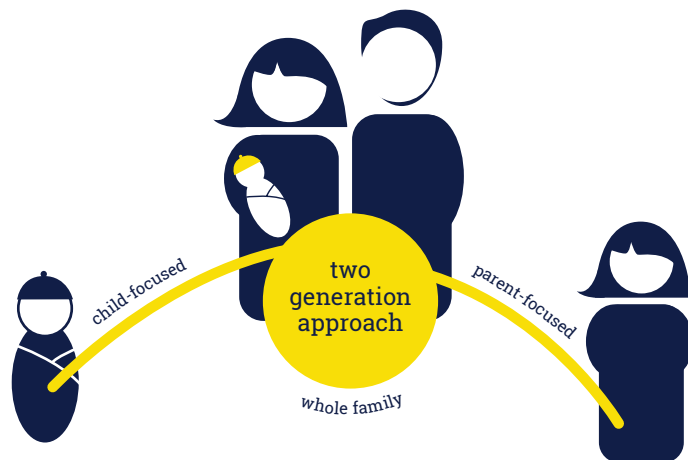
ESTABLISHED: 2010

FAMILIES SERVED SINCE 2010: 1,569

CURRENT FUNDED CAPACITY: 205

NETWORK PARTNERS

- EveryStep
- Visiting Nurse Association of Genesis
- Visiting Nurse Association of Pottawattamie



Better Worlds Start with Great Mothers

Nurse-Family Partnership empowers vulnerable first-time moms to transform their lives and create better futures for themselves and their babies.



Megan Adamczewski
(219) 983-2624

megan.adamczewski@nursefamilypartner-