



CONNECTICUT

Nurse-Family Partnership® is an evidence-based, community health program with over 45 years of evidence showing significant improvements in the health and lives of first-time moms and their children living in poverty.

7x \$ RETURN

EVERY \$1 INVESTED IN NFP SAVES \$7.10 IN FUTURE COSTS FOR THE HIGHEST-RISK FAMILIES SERVED¹

Nurse-Family Partnership works by having specially trained nurses regularly visit young, first-time moms-to-be, starting early in the pregnancy, continuing through the child's second birthday. Mothers, babies, families and communities all benefit.



CONNECTICUT MOMS

23
Median age at intake

81%
Unmarried at intake

74%
Clients enrolled in Medicaid at intake

Less than or equal to \$6,000
Annual median household income at intake

*Aggregate data provided by the NSO. Includes state data from 01/01/2022 to 07/07/2023.

Race
53% White
26% Black or African American
1% Asian
0% American Indian or Alaska Native
0% Native Hawaiian or Pacific Islander
1% Multi-racial
15% Declined

Ethnicity
51% Hispanic
49% Non-Hispanic
3% Declined

*Aggregate data provided by the NSO. Includes state data from 01/01/2022 to 07/07/2023.

OUTCOMES FOR CONNECTICUT

*Aggregate data provided by the NSO. Includes state data from 01/01/2022 to 12/12/2023.

*Babies born at term are those who reached 37 weeks gestation

88% BABIES BORN AT TERM

89% MOTHERS INITIATED BREASTFEEDING

100% BABIES RECEIVED ALL IMMUNIZATIONS BY 24 MONTHS

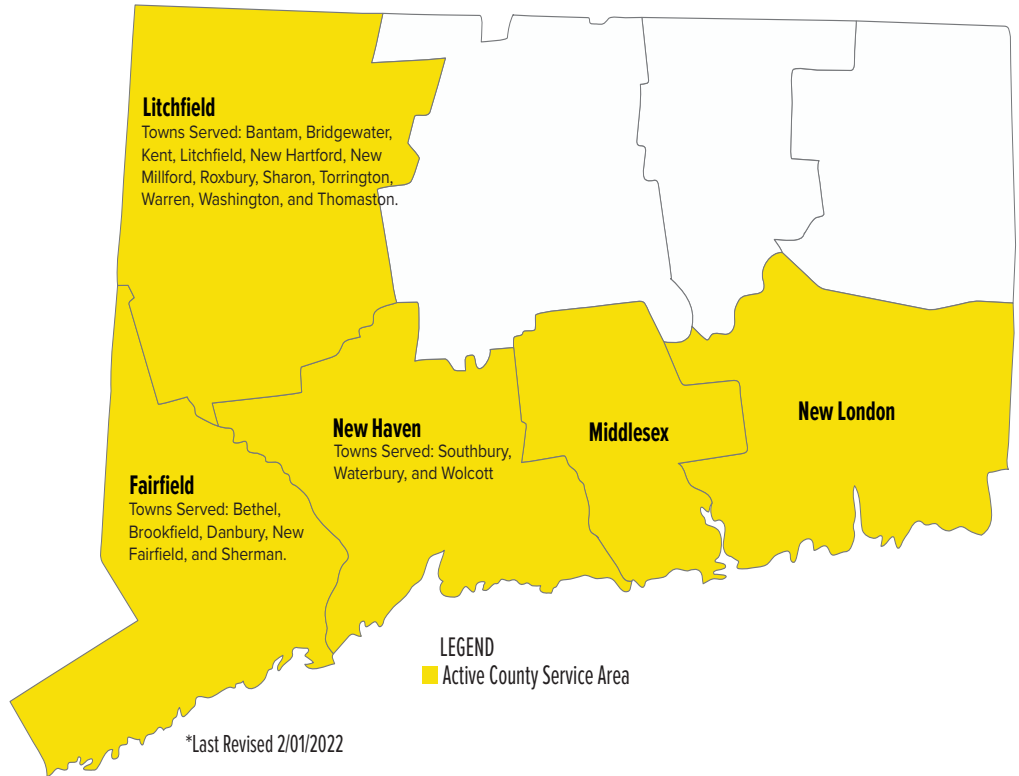
60% OF CLIENTS 18+ WERE EMPLOYED AT 24 MONTHS



CONNECTICUT

Nurse-Family Partnership Goals

1. **Improve pregnancy outcomes by helping women engage in good preventive health practices.**
2. **Improve child health and development by helping parents provide responsible and competent care; and**
3. **Improve the economic self-sufficiency of the family by helping parents develop a vision for their own future.**



ESTABLISHED: 2012

FAMILIES SERVED SINCE 2012: 649

CURRENT FUNDED CAPACITY: 175

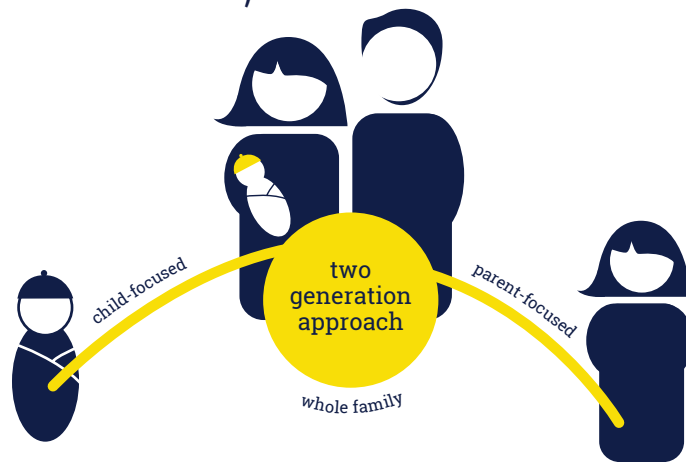


Katelyn Galbraith
(518) 779-0119

katelyn.galbraith@nursefamilypartnership

NETWORK

- RVNA Health
- Visiting Nurse Association of Southeastern Connecticut (Yale New Haven Health)



Better Worlds Start with Great Mothers

Nurse-Family Partnership empowers vulnerable first-time moms to transform their lives and create better futures for themselves and their babies.